

Evalam Color Properties

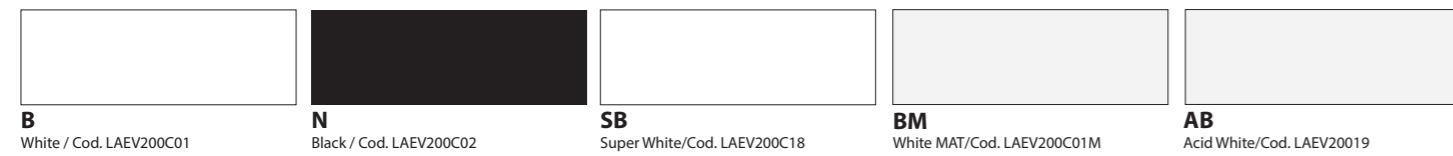
PROPERTIES		
THICKNESS	(mm)	0.38 + - 5%
WIDTH	(mm)	2000
LONG (Black and white mate)	(m)	35
LONG (Other Colors)	(m)	50
GLASS ADHESION	(N/cm)	35
IN PET ADHESION	(N/cm)	14
TEMPERATURE ADHESION	(°C)	100 / 120 Depending on color
DEVIATION COLOUR TOLERANCE*	(%)	-10
ABSORPTION WATER -23°C, 24hr	(%)	0.1
ANTI - AGING outdoor during 1 month		Normal
ANTI - AGING UV Ration Test 2000 h		< 1.5 %
RESISTANCE TO HEAT 100 °c, 2 hrs.		Normal
RESISTANCE TO COLD WATER cold water, 2 months		Normal
RESISTANCE TO HUMIDITY 50°C, 95% RH, 2 weeks		Normal

* Is responsibility of processor to check standard deviation colorus in every batch production



OUTDOOR COLORS

Evalam Opaque 1 Layer Basic



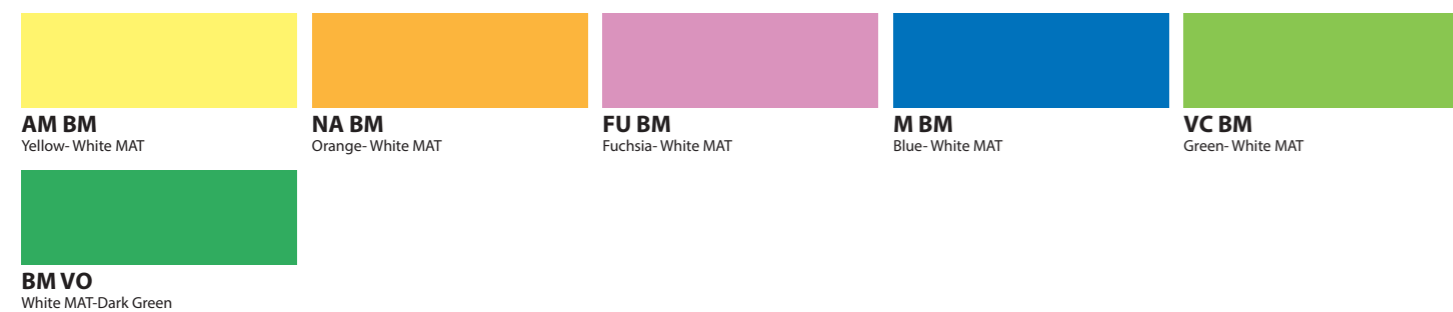
Evalam Translucent 1 Layer Basic

INDOOR COLORS

Evalam Opaque 2 Layers Mixing



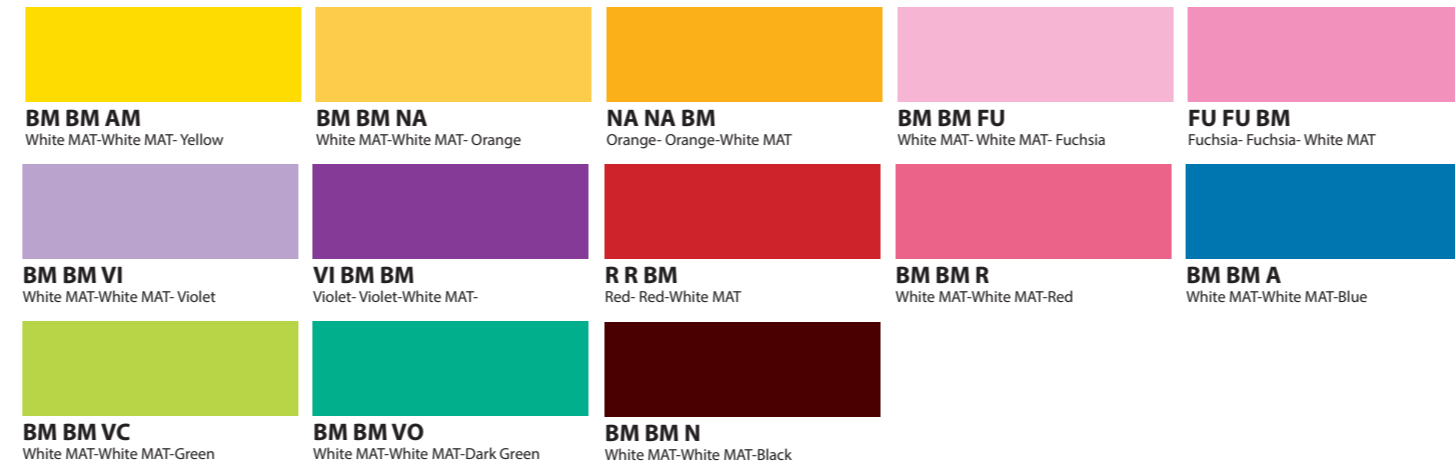
Evalam Translucent 2 Layers Mixing



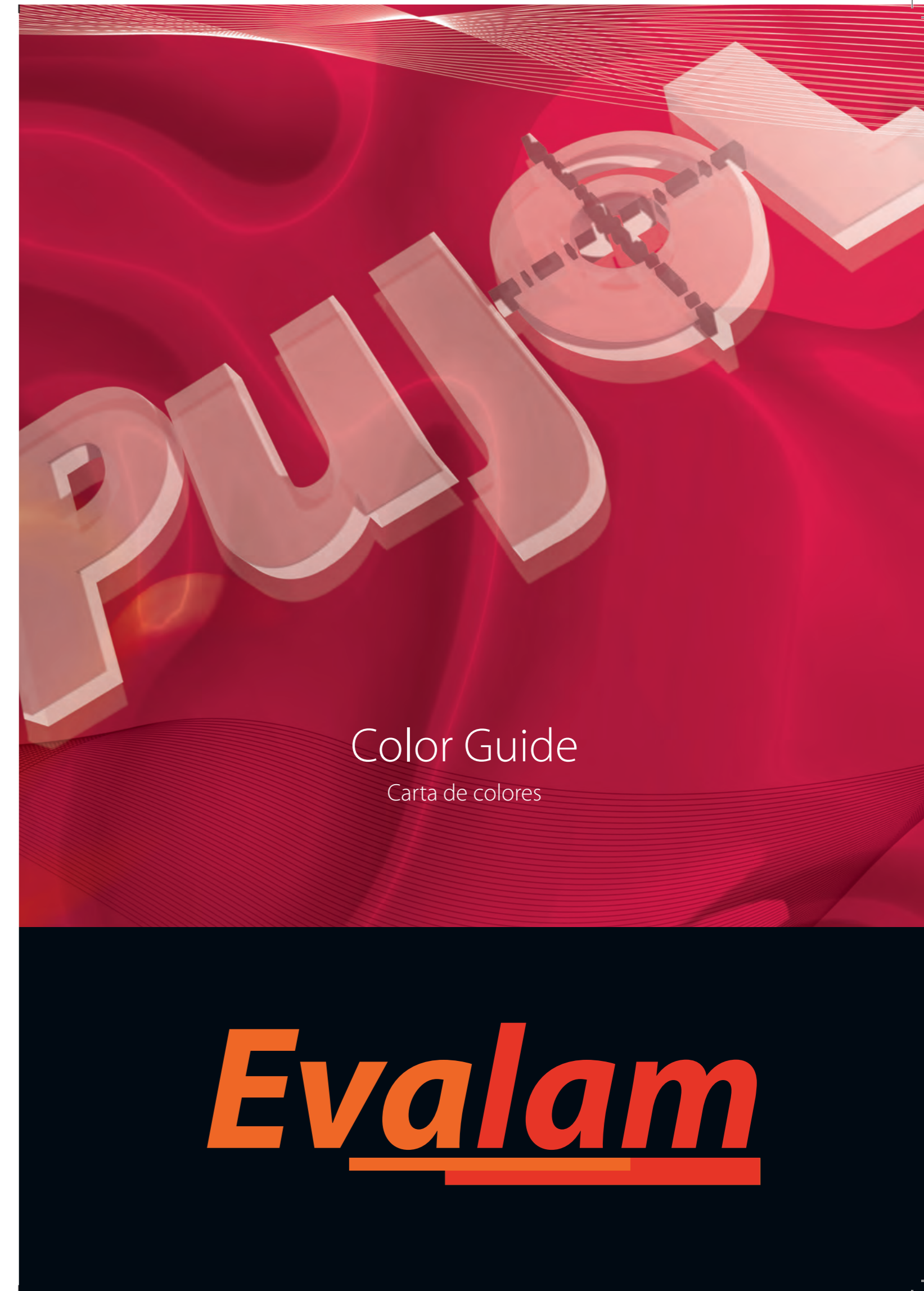
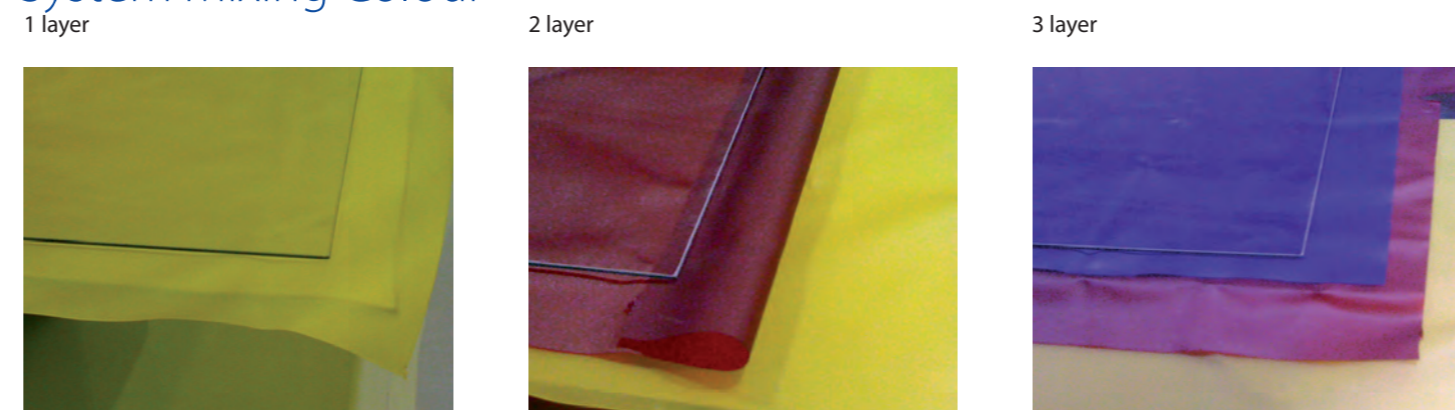
Evalam Opaque 3 Layers Mixing



Evalam Translucent 3 Layers Mixing



System Mixing Colour



Evalam Color

Los únicos en ofrecer la durabilidad y uniformidad del color

El EVALAM COLOR a diferencia del Transparent se ha desarrollado para temperaturas de 120°C que aportan una mayor resistencia del color a través del tiempo.

La mayoría de EVAs de color del mercado cuando son elevados a una temperatura superior a 100°C suelen tener pérdida de tonalidad en los extremos. Esto es fácilmente comprobable con colores como el Red donde la diferencia de tonalidad entre el centro y los extremos es patente cuando se mantiene a alta temperatura el mínimo establecido de 30' para adquirir la resistencia adecuada.

Para evitar la pérdida de tonalidad la inmensa mayoría de fabricantes han optado por trabajar con ellos a temperaturas de 80°C dando prioridad a la uniformidad de color frente a la duración del mismo en el tiempo. Con EVALAM COLOR y en los hornos de laminado de Pujol se consiguen ambas cosas, durabilidad del color y uniformidad.

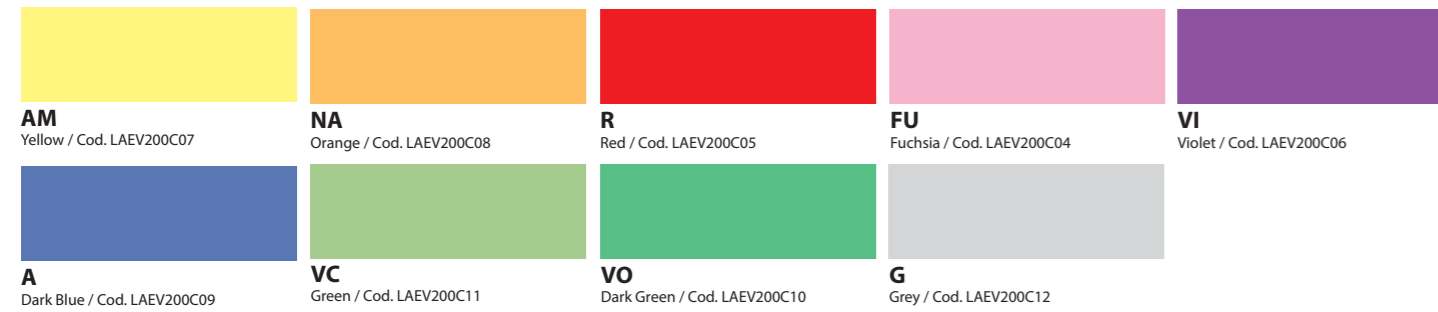
Los standards de fabricación Evalam asumen una desviación en el color del 10% debido a las tolerancias de espesor que afectan a la tonalidad final del producto.

The EVALAM COLOR unlike transparent EVALAM, has been developed for temperatures of 120°C, providing greater resistance of color through time.

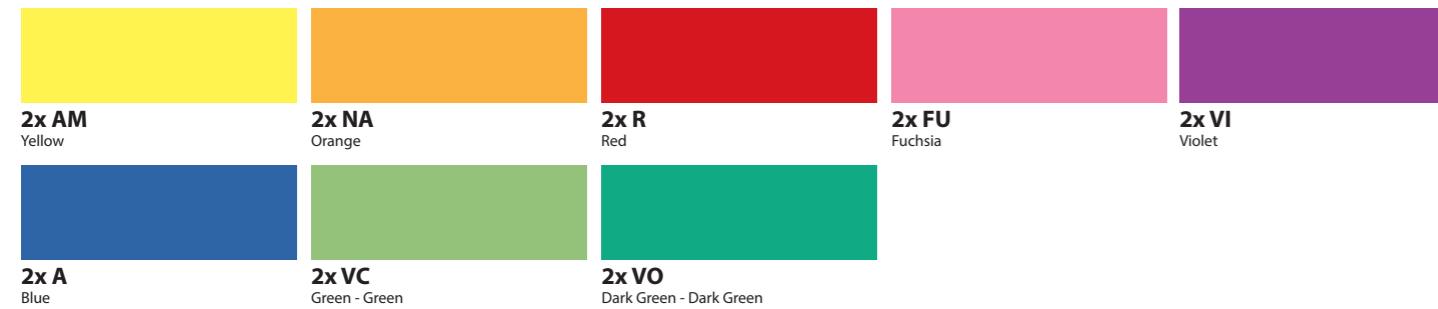
Most EVA colors at the market when are reached at high temperature over 100°C tend to have lost in the shade extremes. This is easily ascertainable with colors like red where the tone difference between the centre and extremes are evident when examining keeps the high temperature minimum of 30' to acquire resistance adequate.

To avoid the loss of shade almost all manufacturers have chosen to work with them at temperatures of 80°C giving priority to uniformity of color compared to the duration of the tone over time. With EVALAM COLOR and Pujol laminating furnaces both goals: durability and color uniformity, are easily achieved. Evalam standards desviation color +/- 10% is accepted by thickness tolerance and is affection on the colour tone.

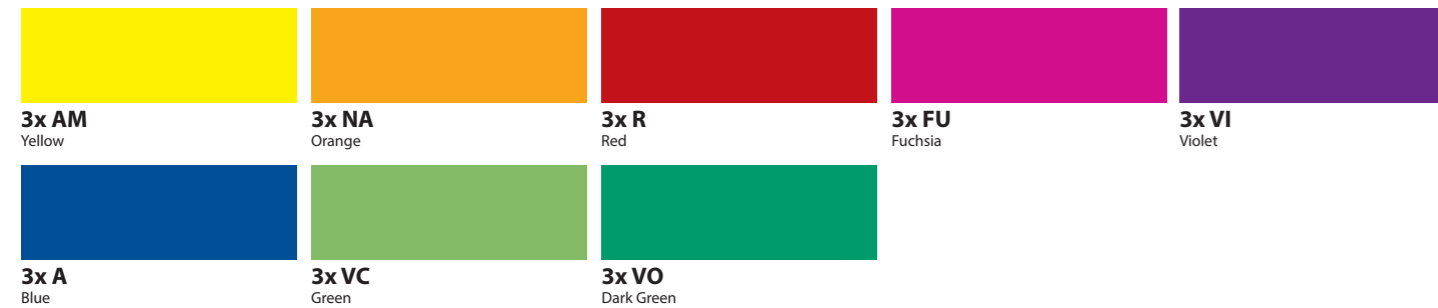
Evalam Transparent One-color 1 Layer Basics



Evalam Transparent One-color 2 Layers Mixing



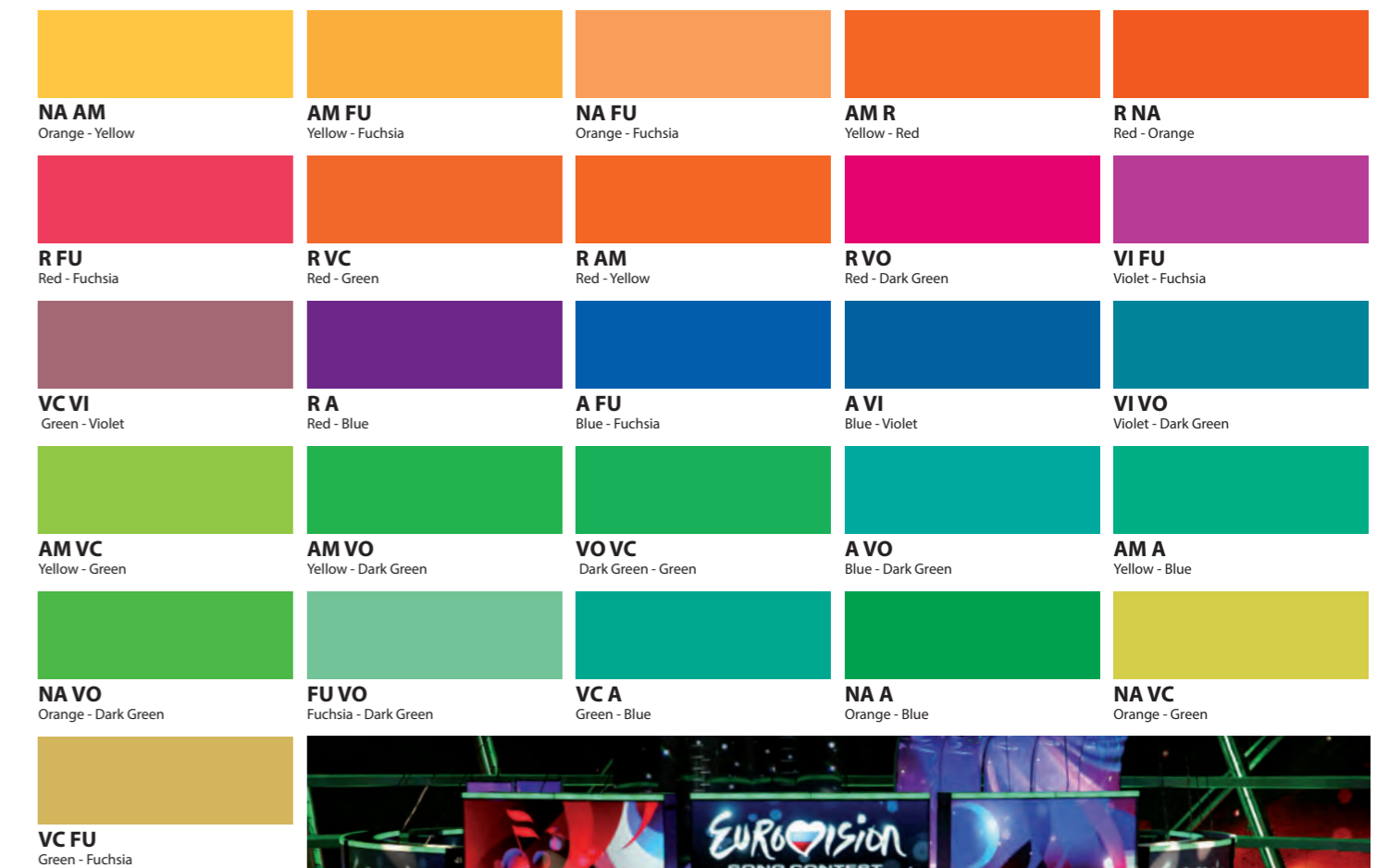
Evalam Transparent One-color 3 Layers Mixing



Evalam Transparent Mixing 3 Layers



Evalam Transparent Mixing 2 Layers



EUROVISION SET MOSCU-2008

EVALAM COLOR in walls and EVALM TRANSPARENT for floor set

